

**S** H O R E  
E N I O R  
O U V E N I R

1933



Shore  
Senior  
Souvenir

• • for 1933 • •

Published by  
The Senior Class  
of  
SHORE HIGH SCHOOL

• FOREWORD •

The Senior class of 1933 issues this book with the hope that it will recall to memory pleasant associations and profitable experiences which we have had at Shore. If we shall accomplish this result, our efforts will not have been in vain.

## SOUVENIR

### • STAFF •

June Babb

Inez Sifleet

Betty Hill

Wilma Stine

Steve Haberle

Elizabeth Vidugerus

Hubert Marshall

Albert Watt

Donald Woodard

Bernadine Koman

Miss Vernon—Literary Advisor

Miss Mitchell—Business Advisor



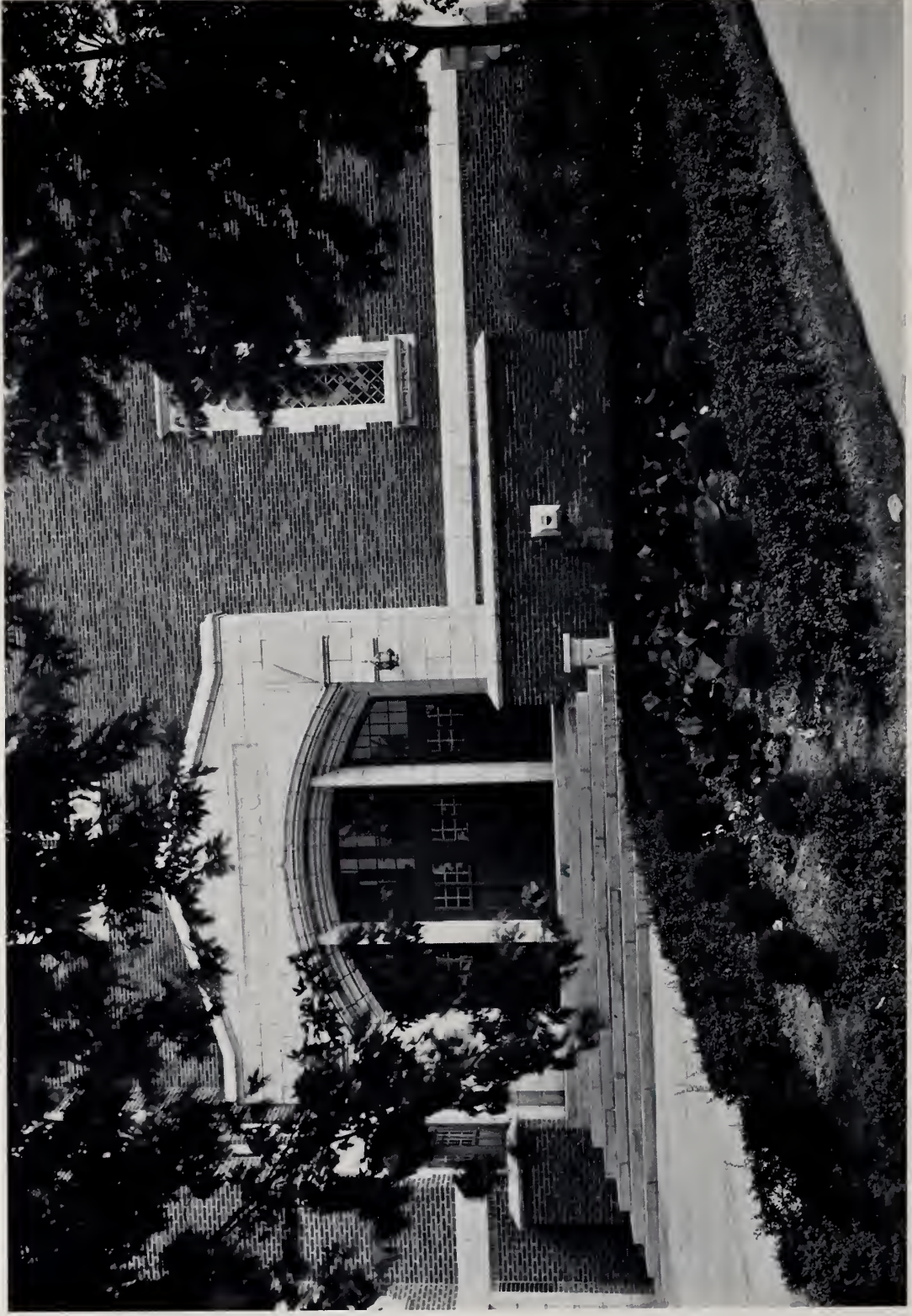
## • • THE SHORE FACULTY • •

**Front Row:** Miss Boucher, Eng.; Miss Darst, Com.; Miss Falberg, Eng.,  
Mr. Metts, Principal; Miss Crone, Math.; Miss Rosenberger, Home Eco.;  
Miss Mitchell, Soc. Science.

**Second Row:** Miss Rehberg, Mus.; Miss Aingworth, Eng.; Miss Beving-  
ton, Mus.; Miss Williams, Lat.; Mr. Pohto, Mech. Draw.; Miss Vernon,  
Eng.; Miss Riddle, Com.; Miss Campbell, Eng.; Mr. Phillips, Chem.

**Third Row:** Mr. Oldt, Com.; Miss Albrecht, Phys. Ed.; Mr. Beck, Mus.;  
Mr. Richardson, Phys. Ed.; Mr. Case, Man. Tr.; Mr. Spangler, Science;  
Miss Cockerill, French.

**Fourth Row:** Mr. Swindler, Math.; Miss Russell, Soc. Science; Mr.  
Baumer, Dram.; Mr. Whiteside, Science.



This entrance, so simple, so classically beautiful, holds a spot dear in the memories of all who call Shore their Alma Mater



**Officers of Class of February 1933**

President.....Elizabeth Vidugeris  
Vice President.....Beatrice Cameron  
Secretary.....June Babb  
Treasurer.....Martha Plummer

**Officers of Class of June 1933**

President.....Hubert Marshall  
Vice President.....Florence Hermle  
Secretary.....Warren Miller  
Treasurer.....Robert Clarke

S  
E  
N  
I  
O  
R  
S  
.  
.  
.  
.

**In Memoriam**

**Robert Clarke**

**1916 - 1933**



**JUNE BABB**

Advertising Committee 2, 3, 4; Glee Club 3, 4; Secretary 3; Asst. Director 4; Friendship Club 3, 4; Porthole Staff 3; Senior Year Book Staff 4; Leaders' Club 3, 4; Vice Pres. 4; Secretary of Class 4; Senior Play 4; Operetta 1, 2.

**ROBERT BROCKMAN**

Entered from Shaker Heights High School, 3; Glee Club 2, 3; Operetta, 2, 3; Hi-Y 2, 3, 4.

**ROSE BUKOVEC**

Glee Club 1; Friendship Club 1, 2, 3, 4; Leaders' Club 3, 4; Senior Play 4.

**BEATRICE CAMERON**

Music Appreciation 1, 2; Class Vice Pres. 2, 3, 4; Camera Club 2, 3; Porthole Staff 3; Glee Club 3; Operetta 3; Leaders' Club 3, 4; President 4; Senior Play 4; Friendship Club 3, 4.

**RUTH COWIN**  
Glee Club 1.**MADLINE DAMICO**

Entered from John Adams High School 2; Orchestra 2, 3, 4; Leaders' Club 4.

**DOROTHY FRISSELL**

Class Treasurer 2, 3; Leaders' Club 3, 4; Student Councilor 4; Friendship Club 4; Shore Breezes 4.

**STEVE HABRELE**

Class Basket-ball 3; Porthole Staff 3; Senior Year Book Staff 4.

**EDWARD HARTMAN**

Class Secretary 3; Wrestling 3, 4; Track 3, 4; Football 4; Glee Club 3, 4; Student Council 3, 4; President 4.

**EUGENE HARWOOD**

Class Basket-ball 1, 2, 3, 4; Stage Work.

**AL HENDERSON**

Glee Club 2, 3; Hi-Y, President 3; Porthole 3; Shore Breezes 2; Class President 3; Senior Play 4.

**BETTY HILL**

Entered from East High School 4; Friendship Club 4; Senior Year Book Staff 4.

**ZVONIMAR HRIBAR**

Vice President 1; Class Secretary 2; Wrestling 3; Senior Play 4.

**EDWARD JEHLICKA**

Entered from Shaw High School 3; Student Councilor 4; Senior Play 4.

**EDWARD MASON****DOROTHY McKEON**

Entered from Shaw High School 3; Student Councilor 3, 4; Porthole Staff 3; Shore Breezes 3.

**DONALD MEISSNER**

Shore Breezes 4; Operetta 1, 2.

**LENORE MURPHY**

Glee Club 1; Leaders' Club 3, 4; Shore Breezes 4; Student Councilor 4.

**PAUL OLRICH**

Entered from Collinwood 4; Senior Play 4.

**MARTHA PLUMMER**

Student Councilor 2, 3; Friendship Club 3, 4; Porthole 3; Class Treasurer 4; Salutatorian.

**ROBERT RATH**

Orchestra 1, 2, 3, 4; Senior Play 4.

**JACK SYLVESTER**

Music Appreciation 1; Track 1; Wrestling 3; Hi-Y 3.

**ELIZABETH VIDUGERIS**

Glee Club 1, 3; Class Treasurer 1, 2; Class President 3, 4; Operetta 3; Shore Breezes 3, 4; Porthole 3; Senior Year Book Staff 4; Friendship Club 4; Leaders' Club 4; Valedictorian.

**VALERIA WILL**

Friendship Club 1; Shore Breezes 3.

**HANS WINTER**

Entered from East High School 3; Class Vice President 4; Porthole Staff 4; Hi-Y 3, 4.

**STEPHANIA ZUPANCIC**

Student Councilor 3; Glee Club 1, 2; Senior Play 4.



LAURENCE  
BECK  
Band 1, 2, 3, 4;  
Orchestra 1, 2, 3,  
4.

WILLIAM  
BOYENCE

JUNE BREYLEY  
Glee Club 1, 2, 3,  
4; Operetta 1, 2, 3,  
4; Friendship Club  
1, 2, 3, 4; Lead-  
ers' Club 3, 4;  
Business Manager  
Shore Breezes 3;  
Porthole Staff 3.

CATHERINE  
BUESCHER  
Leaders' Club 3,  
4; Vice President  
3; Pres. Student  
Council 4; Oper-  
etta 2; Basket-ball  
Squad 3; Shore  
Breezes 3, 4; Port-  
hole Staff 3.

DWIGHT  
CENTNER

KING  
CHRISTOPHER  
Band 1, 2, 3, 4;  
Orchestra 3, 4.

ROBERT  
CLARKE

Football 4; Basket-  
ball 1, 2, 3, 4;  
Track 3; Student  
Council 1, 2, 3;  
Class Treasurer 4;  
National Athletic  
Honor Society 4;  
Vice President of  
Hi-Y 2.

ALICE  
CONNOLLY

Entered from  
Oregon 4; Secre-  
tary of Friendship  
Club 4; Glee Club  
4; Operetta 4.

MAXINE  
COOK

Porthole Staff 3.

MARNE  
CRAMPTON

Student Council 1;  
Music Appreciation  
1, 2; Glee Club 1,  
2, 3, 4; Operetta  
1, 2, 3, 4; Friend-  
ship Club 1, 2, 3,  
4; Vice Pres. 2,  
3; Sec'y 1; Pres-  
ident 4; Shore  
Breezes 1, 2, 3, 4;  
Editor 4; Girls'  
Basketball 2, 3.

BETTY DAVIES

Friendship Club 1,  
2; Leaders' Club  
3, 4.

CHARLES  
DOYLE, JR.

Glee Club 2; Op-  
eretta 2; Student  
Council 2, 4.

WILLIAM FOX  
Wrestling 1, 2, 3,  
4; Football 3, 4.

JOHN  
HENNING

Wrestling 2, 3, 4;  
Football 3, 4; Glee  
Club 3, 4; Oper-  
etta 3, 4.

FLORENCE  
HERMLE

Friendship Club 1,  
3, 4; Vice Pres-  
ident 4; Class  
Treasurer 2; Class  
Vice President 4;  
Basket-ball 1, 2, 3;  
Porthole Staff 3;  
Shore Breezes 3,  
4; Leaders' Club  
3, 4.

FRANKLIN  
JUDSON

Hawken School 1,  
2; Shore Breezes  
3, 4; Student  
Council 4; Chair-  
man, Hall Guard  
System 4.

VIOLET KING

Operetta 1, 2.

DORIS KOEPP

Shore Breezes 4.

BERNADINE  
KOMAN

Glee Club 1, 2, 3,  
4; Operetta 1, 2,  
3, 4; Lead 3, 4;  
Basketball 3;  
Megaphone Club  
2; Shore Breezes  
4; Porthole Staff  
3; Senior Book  
Staff 4.

CEDRIC  
KOONS

Student Council 1;  
Baseball 2, 3, 4;  
Operetta 1, 2, 3,  
4; Band 1, 2, 3,  
4; Basketball 3, 4;  
Varsity "S" Club  
4.

ALBERT LUCAS

Baseball 1, 2, 3,  
4; Football 4;  
Basketball 3, 4.

WILLIAM  
MARESIC

Operetta 3, 4.

HUBERT  
MARSHALL

Porthole Staff 3;  
Year Book Staff  
4; Class Vice  
President 3; Class  
President 4.

HOWARD  
MAXWELL

Operetta 2, 3.

WARREN  
MILLER

Student Council  
Class Secretary 4.

RUTH ELLEN  
MOBERG

Entered from  
Willoughby 3; Glee  
Club 3, 4; Adver-  
tising Committee  
4; Operetta 3, 4;  
Leaders' Club 4;  
Friendship Club 3,  
4; President of  
Leaders' Club 4.

GRACE  
MOELLER

Leaders' Club 3,  
4; Glee Club 3, 4;  
Porthole Staff 3;  
Operetta 3, 4.

STANLEY  
NOCH

Wrestling 3, 4;  
Stage Crew 2, 3,  
4.

MARY NOLAN

Glee Club 1,



EUGENE OILER Glee Club 2, 3, 4; Pres. 4; Operetta 3, 4; Shore Breezes Staff 2.	VIOLET OWEN Basket-ball 1, 2; Leaders' Club 3, 4; Friendship Club 4.	CHARLES PAPOUSCHEK Entered from Fairview High, Dayton 4.	JEANNE PHILLIPS Glee Club 1, 2, 3, 4; Music Apprecia- tion 1, 2, 3; Lead- ers' Club 3, 4; Operetta 1, 2, 4; Friendship Club 2, 3, 4.	DOROTHY POJE Friendship Club 4; Shore Breezes 4; Operetta.	WALTER RUSSELL Entered from East High 3; Wrestling 4.
--	--	--	--	--	---

JANE SANBORN Friendship Club 1; Glee Club 1, 2, 3, 4; Leads in Oper- etta 2, 3; Class Treasurer 3.	GEORGE SCHEPLEY School sports re- porter for news- papers.	LAVERNE SELLERS Glee Club 1, 2; Opretta 1, 2.	INEZ SIFLEET Entered from Glenville 2; De- bating 3, 4; Art Club 3; Senior Book Staff 4; Leaders' Club 4; Vice President Leaders' Club 4; Kent State His- tory Test 4th Place; Valedic- torian.	MARIAN SMITH Glee Club 2, 3, 4; Operetta 2, 3, 4; Leaders' Club 3, 4; Porthole 3; National High School Chorus 3; Friendship Club 4; Band 4.	PETER FRANCIS SOKACH Basket-ball Man- ager 4; Stage Work 1, 2, 3, 4; Accordion Soloist 1, 2, 3, 4.
---	--	--	---	--	---

ALVIN SPATE Entered from Shaw 3.	STANLEY SPEIDEL School sports re- porter for news- papers.	WILMA STINE Entered from Mineola, N. Y. 2; Leaders' Club 3, 4; Debating 3; Senior Year Book Staff 4; Salu- tarian.	ESMA STRAHOSKY Friendship Club 3, 4; Debating 4.	FRANK STRUINA Football 2, 3, 4; Wrestling 3, 4; Varsity "S" Club 3, 4; National Athletic Honor So- ciety 4.	ALEX TAYLOR Band 1, 2, 3, 4; Glee Club 3; Op- eretta 3; Student Council Secretary 4; Orchestra 4.
--	--	---	---	--	--

FRANCIS WALL Track 2, 3, 4; Student Council 3, 4; Vice President 4.	JUNE E. WARDELL Maple Heights 1, 2, 3.	RICHARD WARDELL Maple Heights 1; Basket-ball 4; Class Secretary 2; Glee Club 4; Op- eretta 4.	ALBERT WATT Entered from Glenville 2; Class Secretary 3; Port- hole 3; Debating 3, 4; Advertising Committee 4; Senior Year Book 4.	VIRGINIA WEIR St. Augustine's 1, 2; Lakewood High School 3; Mega- phone Club 3; Leaders' Club 3, 4; Operetta 3, 4.
--	---	---	--	---

DOROTHY WEILER Glee Club 1, 2, 3, 4; Operetta 1, 2, 3, 4; Megaphone Club 2, 3, 4; Girls' Basket-ball 3; Camera Club 1, 2, 3; Girl Re- serves 1, 2, 3, 4.	ENDSLEY WHITE Norman Junior College 1, 2; Heights High School 3.	WALTER WILL	HERBERT WOHLGEMUTH Track 1; Basket- ball 1, 2, 3; Base- ball 1, 2, 3, 4; Varsity "S" Club 1, 2, 3.	DONALD WOODWARD Royal Oak High School 1, 2; Lans- ing Central 3; Year Book Staff 4.
---	---	-------------	--	--

### WITHOUT PHOTOGRAPHS

ROBERT KARRICK Entered from Maywood, Illinois 4.	MARY LOUISE HOFFMAN Springfield High School 1, 2, 3.	REGINA GRACIOUS Glee Club 1.	EDWARD WOOD Lakewood High School 1, 2; Carson-Long Mil- itary Academy 3; Wrestling 4.	CHARLES ROEDER Mimeographer 1, 2, 3, 4.
ARTHUR ELY	ALICE PAYNE	HOWARD COVENEY		



## THE STUDENT COUNCIL

**T**HE Student Council, under the direction of Miss Falberg, has been an organization of true merit at Shore. Its accomplishments have been many. Prominent among them has been the institution of an effective hall guard system. The Council's Senior members are:

Buescher, Catherine

Doyle, Charles

Frissell, Dorothy

Hartman, Edward

Jehlicka, Edward

Judson, Franklin

McKeen, Dorothy

Taylor, Alex

Wall, Francis





## SHORE BREEZES

OUR school newspaper, the *Shore Breezes*, is a four page mimeographed weekly, issued every Wednesday. Special six page editions are published every few weeks, with twelve page editions on such occasions as Hallowe'en, Christmas, and Graduation Week.

The *Breezes* Staff is the first organization to start work in the fall, and the last to stop in the spring. It is the only large organization in school for which no definite school period is set aside.

The *Breezes* stimulates school spirit, increases interest and enthusiasm for athletic events, and presents news and announcements in a snappy manner. The paper is generous in its praise and fair in its criticisms.

The following Seniors are on the *Breezes* Staff:

<i>Editor-in-Chief</i> .....	Marne Crampton
<i>Art Editor</i> .....	Catherine Buescher
<i>Reporters</i> .....	Bernadine Koman
<i>Mimeographer</i> .....	Franklin Judson
<i>Typist</i> .....	Doris Koeppe
<i>Advisor</i> .....	Miss Boucher



## SENIOR BOOK STAFF

**T**HE Senior Book Staff is composed of students from both mid-year and June classes. Each of its members, under the capable faculty guidance of Miss Mitchell, business and photography, and Miss Vernon, literary work, has worked hard in editing and publishing Shore's first Senior Souvenir.

Its members are:

Betty Hill  
Elizabeth Vidugeris  
Steve Habrle  
Donald Woodard  
Albert Watt

Hubert Marshall  
Inez Sifleet  
Bernadine Koman  
June Babb  
Wilma Stine



## ORCHESTRA AND BAND

**U**NDER the able direction of Mr. Beck, seven Seniors help to make up the two largest musical organizations at Shore. The orchestra and band have rendered beautiful music, both to public and school.

### ORCHESTRA

Laurence Beck	clarinet
Cedric Koons	trumpet
Alex Taylor	clarinet
King Christopher	clarinet
Robert Rath	violin
Madeline DaMico	violin

### BAND

Laurence Beck	clarinet
Cedric Koons	trumpet
Alex Taylor	clarinet
King Christopher	clarinet
Marion Smith	cymbals



## GLEE CLUB

**T**HE Girls' and Boys' Glee Club under the direction of Miss Barbara Rehberg has given to the school and to the public a number of good musical performances.

Commencement Exercises, Gala Night, Band Concert, Christmas Carols, and the annual operetta, "Don Alonso's Treasure," were performed ably by these two musical organizations.

Twelve senior girls and six senior boys help make up the Glee Clubs.

### GIRLS' GLEE CLUB

June Breyley	Jane Sanborn
Marne Crampton	Marion Smith
Bernadine Koman	Dorothy Weiler
Ruth Ellen Moberg	Virginia Weir
Grace Moeller	Alice Connolly
Jeanne Phillips	June Babb

### BOYS' GLEE CLUB

Arthur Ely	Eugene Oiler
John Henning	Richard Wardell
William Maresic	Edward Hartman



## FRIENDSHIP CLUB

**T**HE Friendship Club is a branch of the Girl Reserves, and is the High School Y. W. C. A. Since being founded three years ago the club has accomplished much good work under the guidance of Miss Havens and Miss Campbell. The Senior members are:

Elizabeth Vidugeris  
Dorothy Poje  
Rose Bukovic  
Violet Owen  
Martha Plummer  
Esma Strahosky  
Marion Smith  
Betty Hill  
Ruth Ellen Moberg

Dorothy Weiler  
Alice Connolly  
Dorothy Frissell  
Beatrice Cameron  
Jeanne Phillips  
June Breyley  
Florence Hermele  
Marne Crampton  
June Babb



## LEADERS' CLUB

**T**HIS organization, under the supervision of Miss Albrecht, is composed of the students in the girls' gym classes who aid in the work. The Seniors who are members are:

Ruth Ellen Moberg  
June Breyley  
Beatrice Cameron  
June Babb  
Inez Sifleet  
Violet Owen  
Madeline DaMico  
Jeanne Phillips  
Dorothy Frissell

Betty Davies  
Elizabeth Vidugeris  
Lenore Murphy  
Florence Hermele  
Rose Bukovic  
Wilma Stine  
Grace Moeller  
Virginia Weir  
Catherine Buescher



## FOOTBALL

THE 1932 football season with Coach "Chump" Richardson directing the squad was the most successful of recent years. Shore finished in the runner-up position, second only to Shaker in the Eastern Conference. Shaker defeated Shore in the final game of the season for the championship.

Bob Clarke—tackle, Bill Fox—guard, Ed Hartman—halfback, John Henning—guard, and Frank Struna—end, were the graduates who hung up their cleats for the last time at Shore.

Here are the scores:

	Opponents	Shore
Willoughby .....	0	0
John Marshall .....	0	8
*Maple Heights .....	0	13
*Central .....	6	33
*Brush .....	6	25
*Bedford .....	0	21
*Shaker Heights .....	28	0
	—	—
	40	100

\*Eastern Conference games. Won 5. Lost 1. Tied 1.



## BASKET-BALL

**U**NDER Coach Case's able direction Shore finished in the runner-up position in the Eastern Conference.

When Bob Clarke and Herb Wohlgemuth receive their diplomas, Shore will have graduated two of her best athletes of many years. Ces Koons, another first team member, proved his value in the latter part of the season.

Al Lucas and Dick Wardell did fine work on the "B" team.

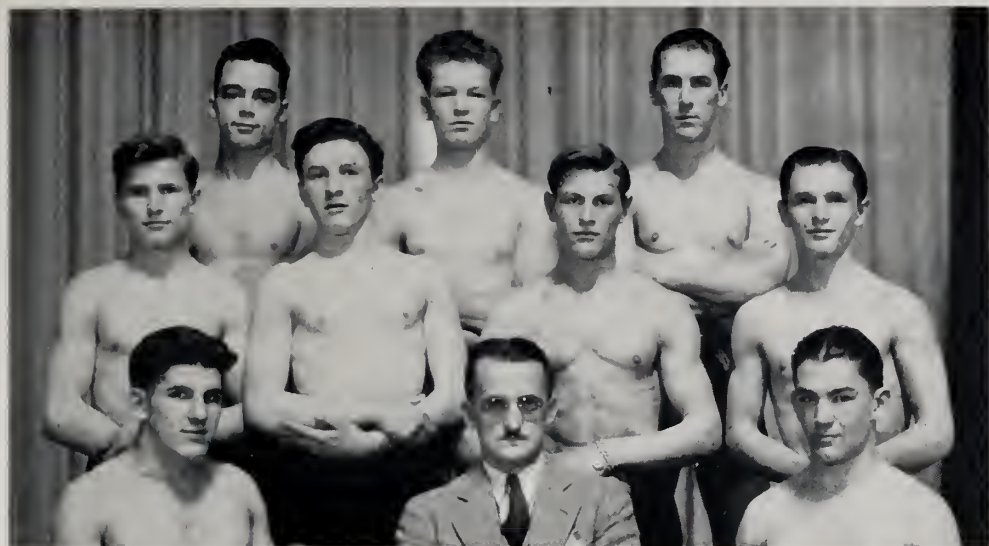
Bob Clarke played center, Herb Wohlgemuth, guard, and Ces Koons, forward.

Coach Case developed a great scoring combine averaging over 32 points per game over a hard schedule of 15 games.

	Opponents	Shore
*Nash Prep	7	81
Brush	13	27
Central	15	32
Maple Heights	19	37
Bedford	35	27
Shaker	22	28
Brush	11	41
Central	12	28
*Cathedral Latin	21	28
Maple Heights	26	33
Bedford	15	29
Shaker	20	14
*Willoughby	15	21
*Garfield Heights	37	39
*Holy Name	28	21
	—	—
	297	484

\*Non-conference games. Won 12. Lost 3.





## WRESTLING

WITH Mr. Pohto again in charge, the 1932-33 wrestling season was a decided success. In the Greater Cleveland Wrestling Contest, Shore was tied for first place with John Hay, having been beaten by that school in a meet, but leading the conference in points.

John Henning 145 pd. class, Edward Hartman 130 pd. class, William Fox 155 pd. class and Frank Struna 165 pd. class were the only senior lettermen who reported to Mr. Pohto at the beginning of the season.

Walter Russell 130 pd. class and Edward Wood 135 pd. class, both newcomers on the team, received letters for good work. Captain William Fox received a silver medal in the City Tournament and John Hanning received a ribbon for third place.

The following is Shore's summary of meets:

SHORE:	OPONENTS:	
23	Cuyahoga Falls .....	14
26	Garfield Heights .....	15
44	Collinwood .....	0
22	Euclid Central .....	10
47	Mayfield .....	0
12	John Hay .....	17
28	University School .....	7
—		—
202		63



Good Morning



There's No Room For You



I Don't See The Birdie



Come Stroll With Me



Hug Me Tight



Look Sweet!



Love Me Love My Cat



Who are you?



Curly-Head



Young Diogenes



The Maid Was In The Garden



Me and My Pat



How Are You?



This Hot Weather!



Please Come In

(Key on page 29)



Officers



Puzzle: Find The Seniors ▲



Sr. Debaters



Isch You Der Charlie?



June



Flop



LARRY



Prilomena and Marian



Good Times



Nimrod

## Last Will and Testament

**We**, the Mid-year Class of 1933 of Shore High School being of sound mind and body, do hereby declare this our last will and testament.

**First**—We leave all of our books, papers, and other such trash to anybody interested.

**Second**—We appoint Miss Williams as executor of our last will and testament.

**Third**—

June Babb leaves her girlish figure to Eileen Koeppe.

Bob Brockman leave his memories in the office to anyone who wants them.

Ruth Cowin leaves her height to Clyde Steele.

Al Henderson leaves his ability to Anna Hrovat.

Bettie Hill leaves her jolliness to all incoming "Freshies".

Paul Olrich leaves his quietness to Lawrence Beek.

Dorothy Frissell leaves her quietness to Doris Weir.

Steve Habrle leaves his shorthand books to Miss Darst.

Beatrice Cameron leaves her French papers to Miss Cockerill.

Ed Hartman leaves his wrestling ability to Norman Gerner.

Rose Bukovec leaves her typing ability to all the Shore Breezes typists.

Zvonimar Hribar leaves his car to all pupils who have to walk to school.

Madelaine DaMico leaves her musical ability to all beginners.

Edward Jehlicka leaves his ability to speak French to all future French students.

Dorothy McKeon gladly leaves all her books to her teachers.

Edward Mason is just glad to leave the school.

Lenore Murphy leaves her height to Dick Finan.

Donald Meissner leaves his art ability to all future cartoonists.

Martha Plummer leaves her Latin books to her sister.

Robert Rath leaves his acting ability in the Senior Play to all future Seniors.

Elizabeth Vidugeris leaves her knowledge to James Coolidge.

Jack Sylvester leaves his toothpicks strewn everywhere.

Valeria Will leaves a few inches to Florence Felker.

Hans Winter leaves his playful antics to all the teachers as a remembrance.

Stephania Zupancic leaves her cashier's ability to future cashiers.

Gene Harwood leaves his journalism book to Mr. Baumer.

Signed, sealed, and declared as and for their last will and testament, by the above named testators, in our presence, at their request, and in their presence, and the presence of each other.

Barney Google

Hoeye

George Washington

We, the Senior class of 1933, by employing such measures as the recall, recount, referendum, and other such political red tape ceremonies, hope to convince the general unthinking public, that our class is of sane mind.

On this month, day, year, hour, and other unnecessary items—we do wisely or otherwise bequeath our inconsequent idiosyncrasies to the unfortunate undergraduates and fellow successors. May the beneficiaries prosper.

Catherine Buescher bequeaths her personality to the school board.

Charles Papousehek has a hidden motive for willing his sprinting ability to the detention committee.

Howard Maxwell leaves "the last drop" to the freshies.

Marne Crampton bequeaths her woman's intuition to Mr. Baumer.

Florence Hermle leaves her athletic ability to Betty Ann Camplejohn.

Walter Will, in his unusual state of mind, hereby leaves Shore High where it has stood since erection.

LaVerne Sellers—her lipstick to the stage crew for better scenery.

June Breyley—her linguistic ability to Ray Shaughnesey.

Dorothy Poje wills her art of vamping to Virginia Pierson.

Mary Nolan leaves her smile in dark corners.

Franklin Judson—his correspondence course on How to Detect Fake Hall Passes to all blundering guards. (God bless 'em.)

Endsley White bequeaths his southern drawl to Milton Wolfe.

Cedric Koons—his trumpet to study hall teachers for playing reveille.

Alex Taylor wills his scientific thinking to Don Dixon.

William Fox—his toe hold to Jimmie Fowler.

Francis Wall—his purple tie to Mr. Whiteside.

Inez Sifleet—her history knowledge to Robinson.

Ruth Ellen Moberg—her long hair to Jane Hoffman.

Al Lucas bequeaths his Ford to the Smithsonian Institute.

Howard Coveney leaves his stature to Richard Weinsrieder.

Chuck Roeder bequeaths his toothpicks, matches, etc., to underfed sophs.

Stanley Noch—his permanent wave to Everett Pepin.

Mary Louise Hoffman is willing to leave her blonde wig to all girls who think their boy friends prefer blondes.

Don Woodard disposes of his beard and Barbasol to Bud Keller.

I, Bill Boyancee, do by this act, give full possession of my complexion to the Palmolive Soap Company.

Hubert Marshall parts with his amalgamated expressions in favor of future Shore politicians.

Marian Smith—her leopard skin dress to Tarzan of the Apes.

Dick Wardell—his good looks and unsurpassed intelligence to Harry Oberst.

King Christopher—his clarinet to the physics class for sound experiments.

George Schepley bequeaths his hair for a barber's nightmare.

Dorothy Weiler hasn't made up her mind yet.

After much pressure had been brought to bear, Alvin Spate finally consented to give his boldness to Doris Weir, in case her efficiency as a sculptor becomes threatened.

Lawrence Beck will keep his hatred for women, so what can we do about it?

Doris Koepf leaves her quietness to James Palko.

Walter Russell wills his French book to Mr. Stray to start the furnace with.

Gene Oiler bequeaths his wise cracks to anyone who can stand the strain.

Betty Davies regretfully leaves Midge Easterling.

Violet King does hereby will her modulated voice to Ed Pergler.

Frank Struna leaves his "line" to some poor fish.

Jean Phillips is willing to give up anything that she has,—that is, except . . .

Esma Strahosky leaves W. B. to designing females.

Al Watt throws "de-bait" into Lake Eric.

William Maresic—his bass voice to Mr. Beck.

Maxine Cook leaves her typewriter to the office.

Warren Miller wills his love for the light fantastic to Dale Winslow.

Ed Wood leaves his military coat to the C. M. T. C.

Jane Sanborn—her nimble feet to Clyde Steele.

Virginia Weir says she hasn't anything anybody would want, but if she had she would leave it to Ed Sutorius.

Bernadine Koman, after much hesitation, kindly consents to will her "roles" to Greta Garbo.

Dwight Centner wills his blush to anyone who wants it. He doesn't!

Violet Owen does hereby bequeath a freckle to Bob Yochum.

June Wardell—her sisterly love (for Dick) to Eleanor Keller.

Wilma Stine wills her high grade getting ability to anyone who will work for it.

Alice Connolly—a few pounds to bolster up the English mint.

Bob Karrick wills his bashfulness to Bob Wall.

Grace Moeller bequeaths her blond hair to Marie Zweirlein.

Herbert Wohlgenuth—his villainous instincts to the auditorium stage.

John Henning leaves his chest measurement to Dan Amadick.

The authenticity of this document has been tested and attested on this rare day of April the first, nineteen hundred and thirty-three, by the law offices of Finkelstine, Finkelstine, Finkelstine, and O'Rourke. What a man he must be.

Witnessed and signed:

First Witness— Baron Munchausen

Second Witness—Hugo

Testators— Albert Watt

Donald Woodard

*Compliments of*

**EAST SHORE COMMUNITY CLUB**

**KEY TO BABY PICTURES**

Good Morning—Francis Wall  
Hug Me Tight—Mary Nolan  
Curly Head—Jeanne Phillips  
How Are You?—Violet King  
There's No Room For You—Esma  
Strahosky  
Look Sweet!—LaVerne Sellers  
Young Diogenes—Wilma Stine  
I Don't See The Birdie—Violet Owen  
Love Me, Love My Cat — Marion  
Smith  
The Maid Was In The Garden —  
Dorothy Weiler  
This Hot Weather!—King Christo-  
pher  
Come Stroll With Me—Ruth Ellen  
Moberg  
Who Are You?—June Breyley  
Me And My Pal—Bernadine Koman  
Please Come In—Dorothy Frissell

F. Struna—That dollar you gave me yesterday was a counterfeit. What do you mean by that?

A. Taylor—Well, didn't you say to me, "I want a dollar and I want it bad?"

---

An elderly English woman traveling through the southern states—"My Dear! On this bill of fare it says: Baked Indian Pudding. Can this be a civilized country?"

---

Charles Doyle—If you stood in my shoes, what would you do?

F. Judson—I'd give them a shine, to start with.

---

An angry Traffic Officer—Can't you go any faster?

Don Meissner (whose car is holding up traffic)—I can, but I don't want to leave the car.

Milk for Health

LINNERT DAIRY

*Patronize Home Industries*

589 East 118th St.

KEn. 0222

Diplomas

Announcements

Engraved Cards

Certificates

Invitations

Programs

School Supplies



THE HARTER  
PUBLISHING CO.

2046 East 71st Street

Cleveland, Ohio

J. R. Holcomb & Co.

*School Supplies*

1518 St. Clair Avenue

CLEVELAND, OHIO

Work in this Annual

PORTRAITS

GROUPS

made by

The Newman Studio

1750 Euclid Avenue, Cleveland

Spencerian has "IT"

Every month between two and three  
hundred firms ask for "IT"

Drop us a line, or telephone for "IT"

Spencerian School

*Commerce, Accounts, Finance*

PRospect 4500

3201 Euclid Avenue Cleveland, Ohio



*Compliments of*

**H. E. ARNOLD  
HARDWARE**

22030 Lake Shore Blvd.



**FOX BROS.**

724 East 105th Street

Cleveland, Ohio



**WICKLIFFE  
LUMBER CO.**

Wickliffe, Ohio



**MAYOR Charles Ely**

**Does Your Club  
Need Money?**

Hundreds of school and church organizations have successfully used our plan. For full particulars—see



**THE WHEATCRISP  
COMPANY**

2104 Superior Avenue

Cleveland, Ohio

**CANDY**

**NUTS**

**SPECIALTIES**

**FLOYD B. STEIN, Inc.**

Paving and Sidewalk  
Contractor

**STEAM AND DOMESTIC COAL**  
of All Kinds

*Yard and Office*  
Babbit Rd. and Nickel Plate R. R.

We Have a Coal For Every Need

*Let Us Take Care of You*

**The Penn Sanitary  
Laundry Co.**

840 E. 93rd Street

EDdy 7547-8-9

Wickliffe 84-W-4

*Recognized for Quality*

# HERFF-JONES CO.

(Incorporated)

*Manufacturing Jewelers and Stationers*

1411-1419 North Capitol Avenue

INDIANAPOLIS

B. D. Lehman

Dependable . . .

That's Wright

SHOES, FURNISHINGS and  
DRY GOODS

Wright  
Department Store

18 in Greater Cleveland

Bring You More for Less

East Cleveland School  
of Business

14250 Euclid Avenue at Beersford Rd.

All Business Branches  
Day and Night Sessions

MR. AND MRS. THOS. P. SCULLY

GLen. 8893

*Compliments of*

TELLING BELLE VERNON

The Evangelical Press.



